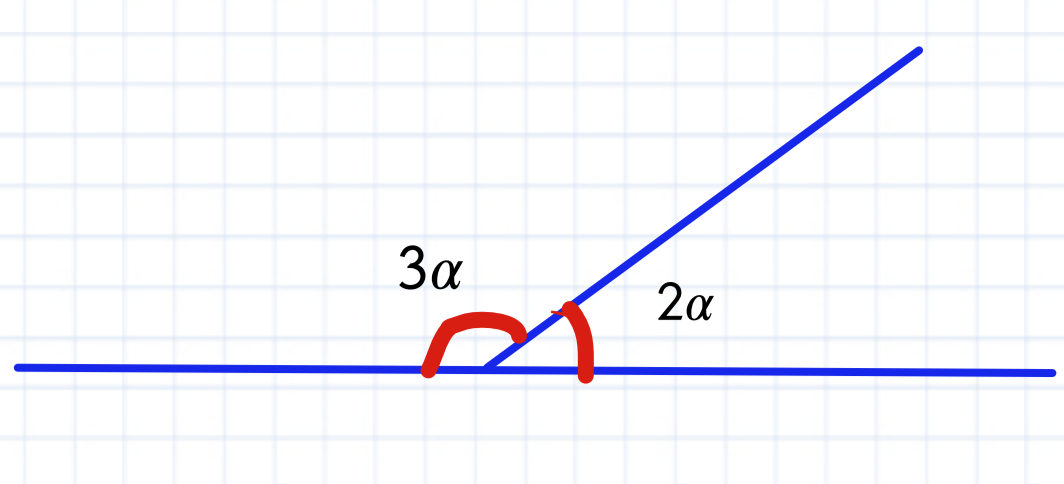


1

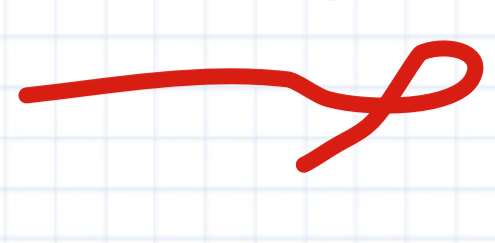


$$3\alpha + 2\alpha = 180$$

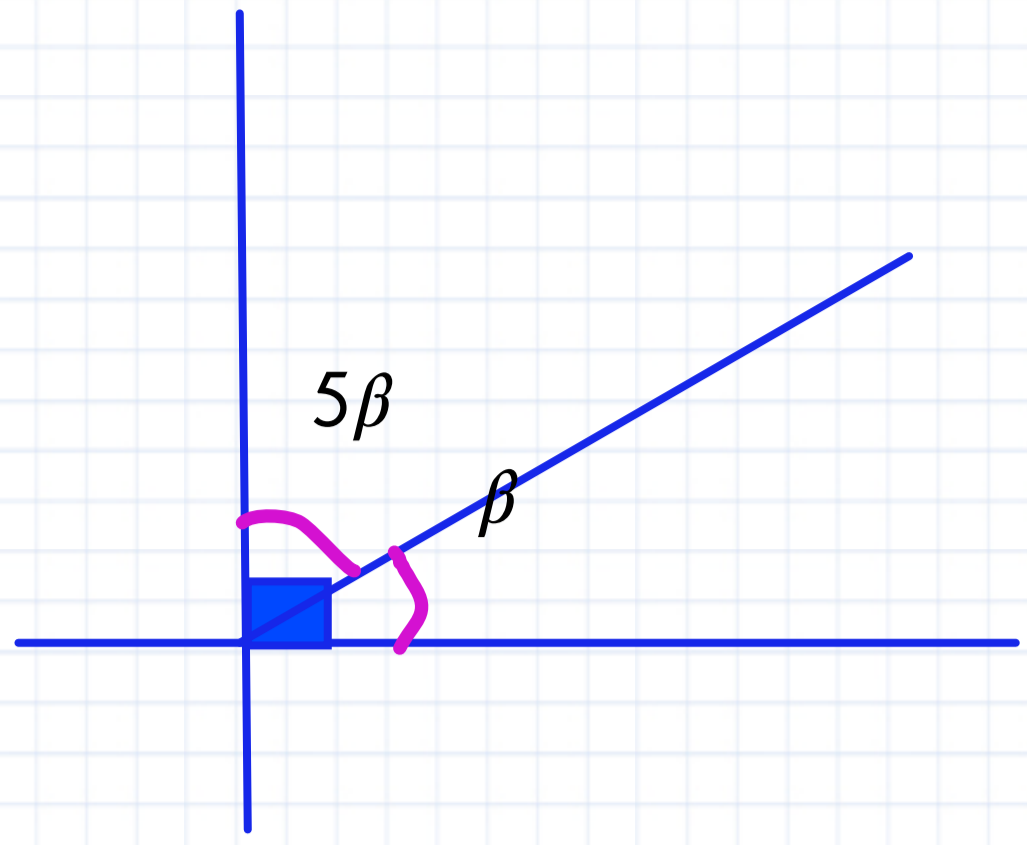
$$5\alpha = 180$$

$$\alpha = \frac{180}{5}$$

$$\alpha = 36$$



2

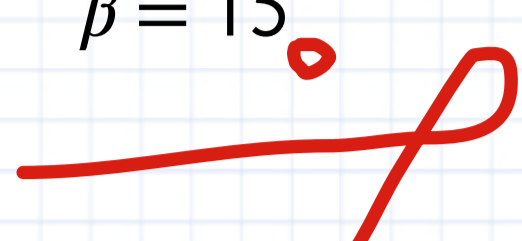


$$5\beta + \beta = 90$$

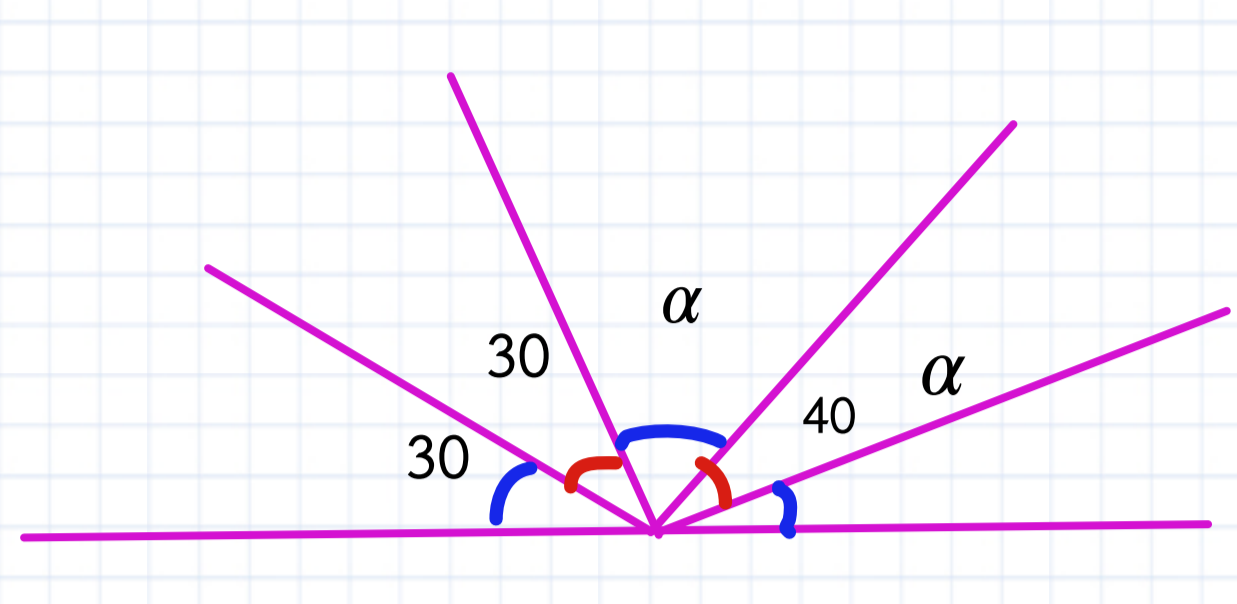
$$6\beta = 90$$

$$\beta = \frac{90}{6}$$

$$\beta = 15$$



3



$$30 + 30 + \alpha + 40 + \alpha = 180$$

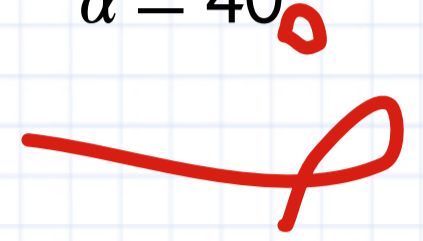
$$100 + 2\alpha = 180$$

$$2\alpha = 180 - 100$$

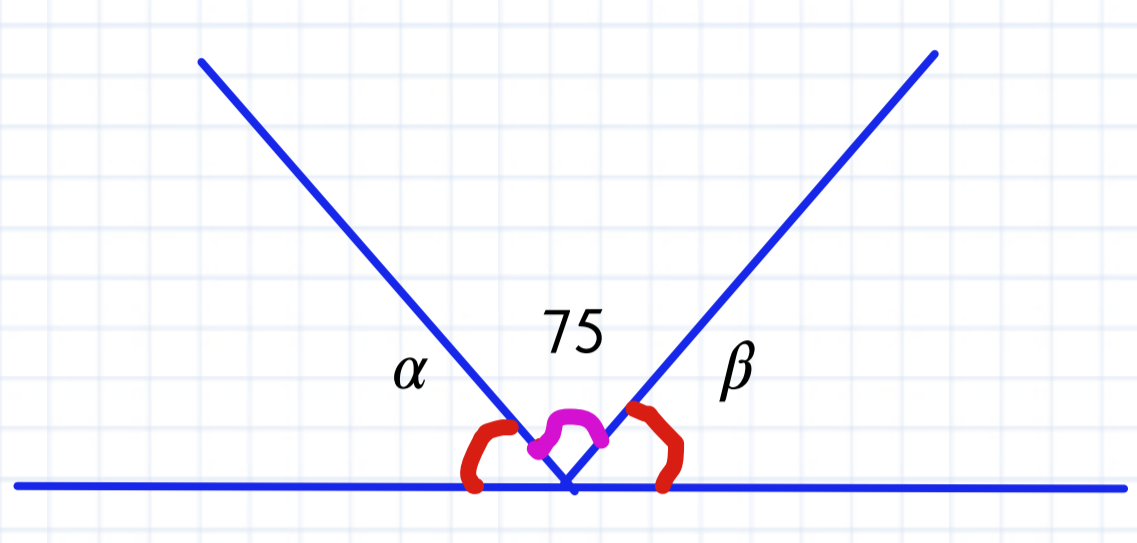
$$2\alpha = 80$$

$$\alpha = \frac{80}{2}$$

$$\alpha = 40$$



4



$$\alpha + 75 + \beta = 180$$

$$\alpha + \beta = 180 - 75$$

$$\alpha + \beta = 105$$



5

Angulo = x

$$C = 90 - x$$

$$S = 180 - x$$

$$90 - x + 180 - x = 3x$$

$$270 - 2x = 3x$$

$$270 = 3x + 2x$$

$$270 = 5x$$

$$\frac{270}{5} = x$$

$$54 = x$$

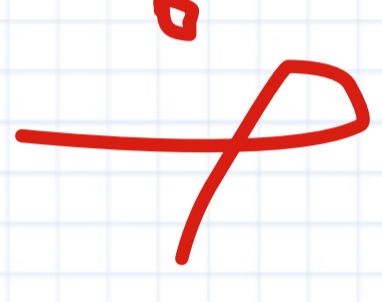
$$SC(x)$$

$$SC(54)$$

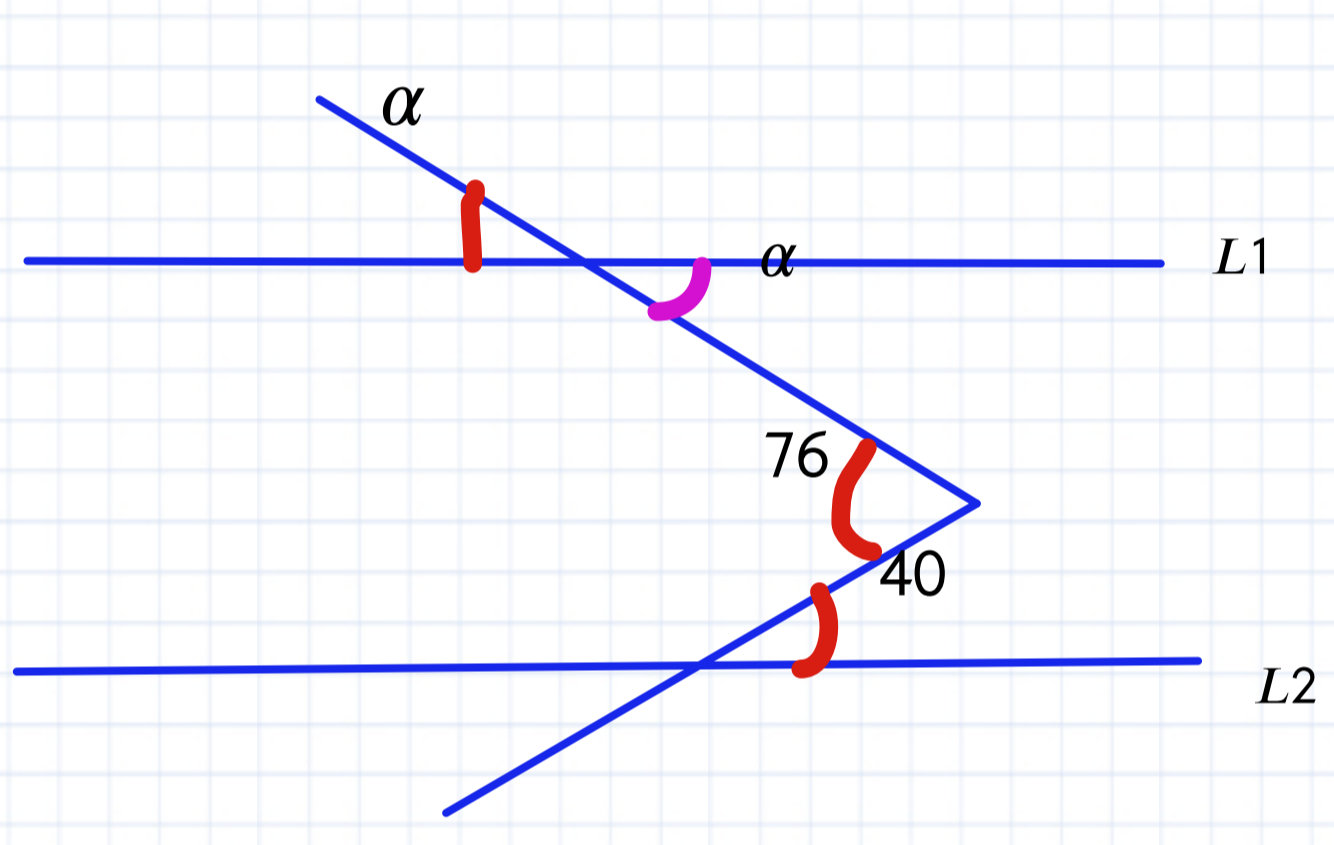
$$S(90 - 54)$$

$$S(36)$$

$$180 - 36 = 144$$



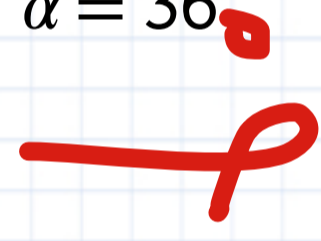
6



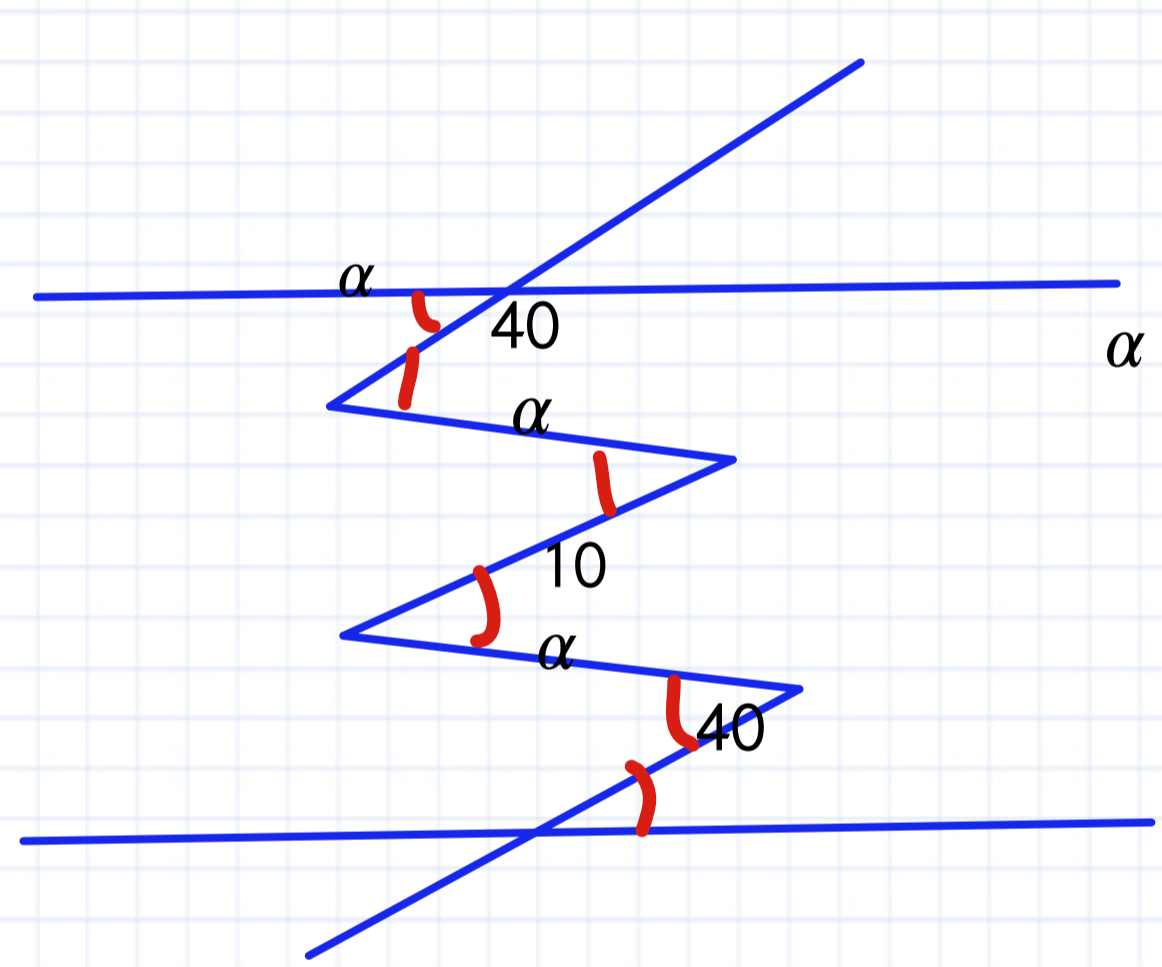
$$\alpha + 40 = 76$$

$$\alpha = 76 - 40$$

$$\alpha = 36$$



7



$$\alpha + \alpha + \alpha = 40 + 10 + 40$$

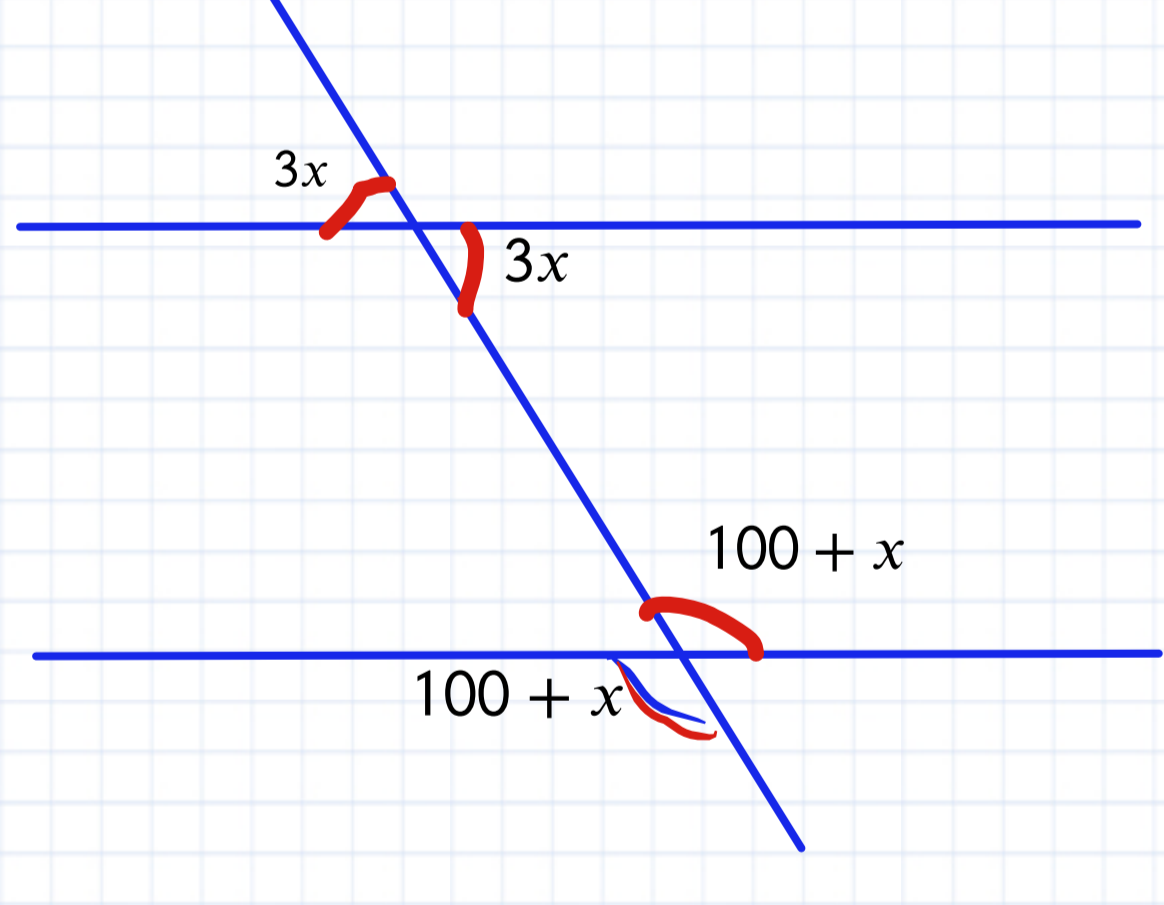
$$3\alpha = 90$$

$$\alpha = \frac{90}{3}$$

$$\alpha = 30$$



8



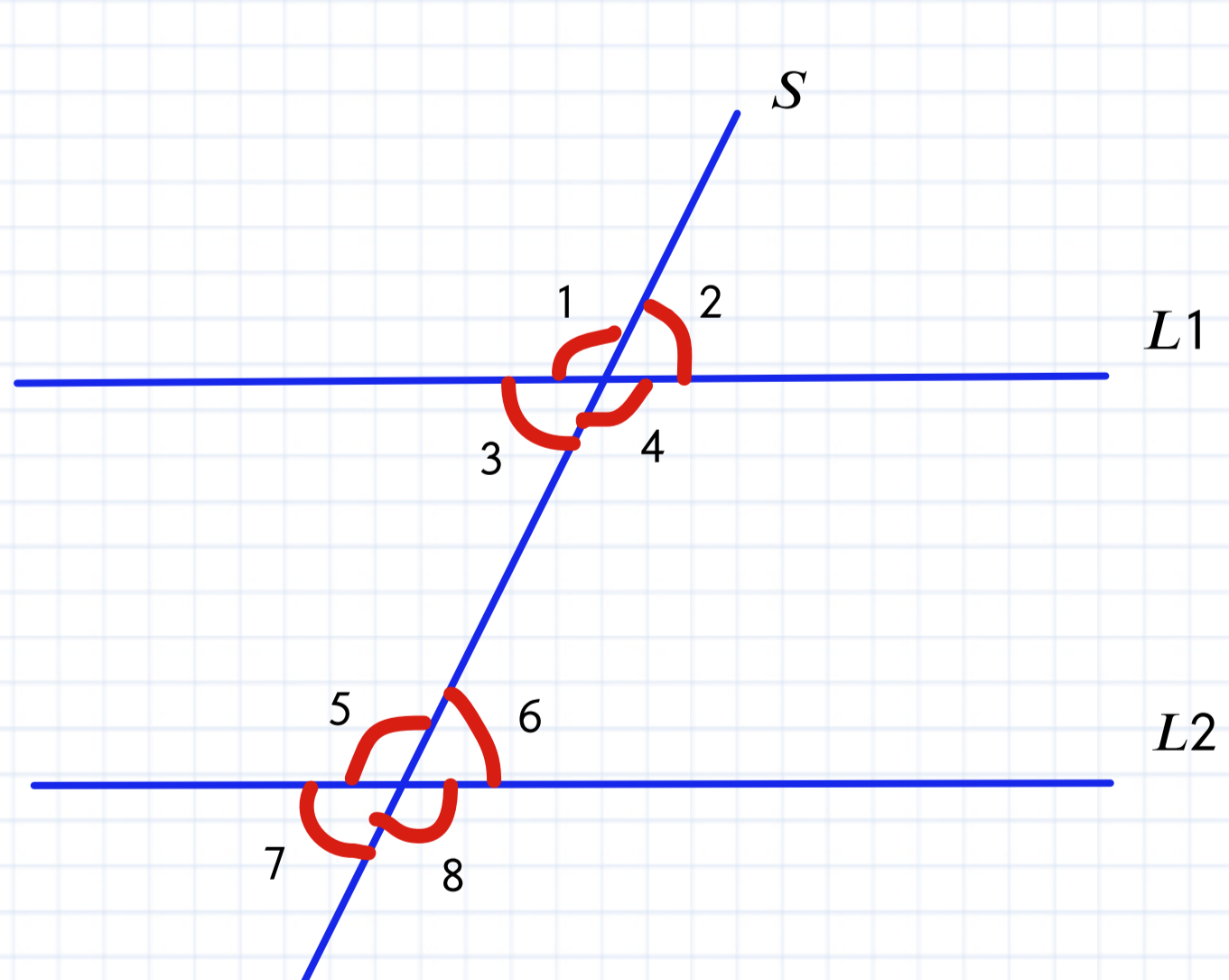
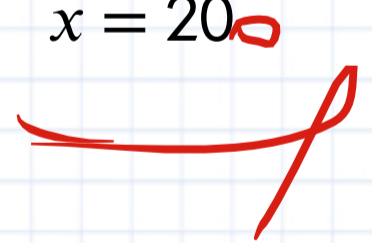
$$3x + 100 + x = 180$$

$$4x = 180 - 100$$

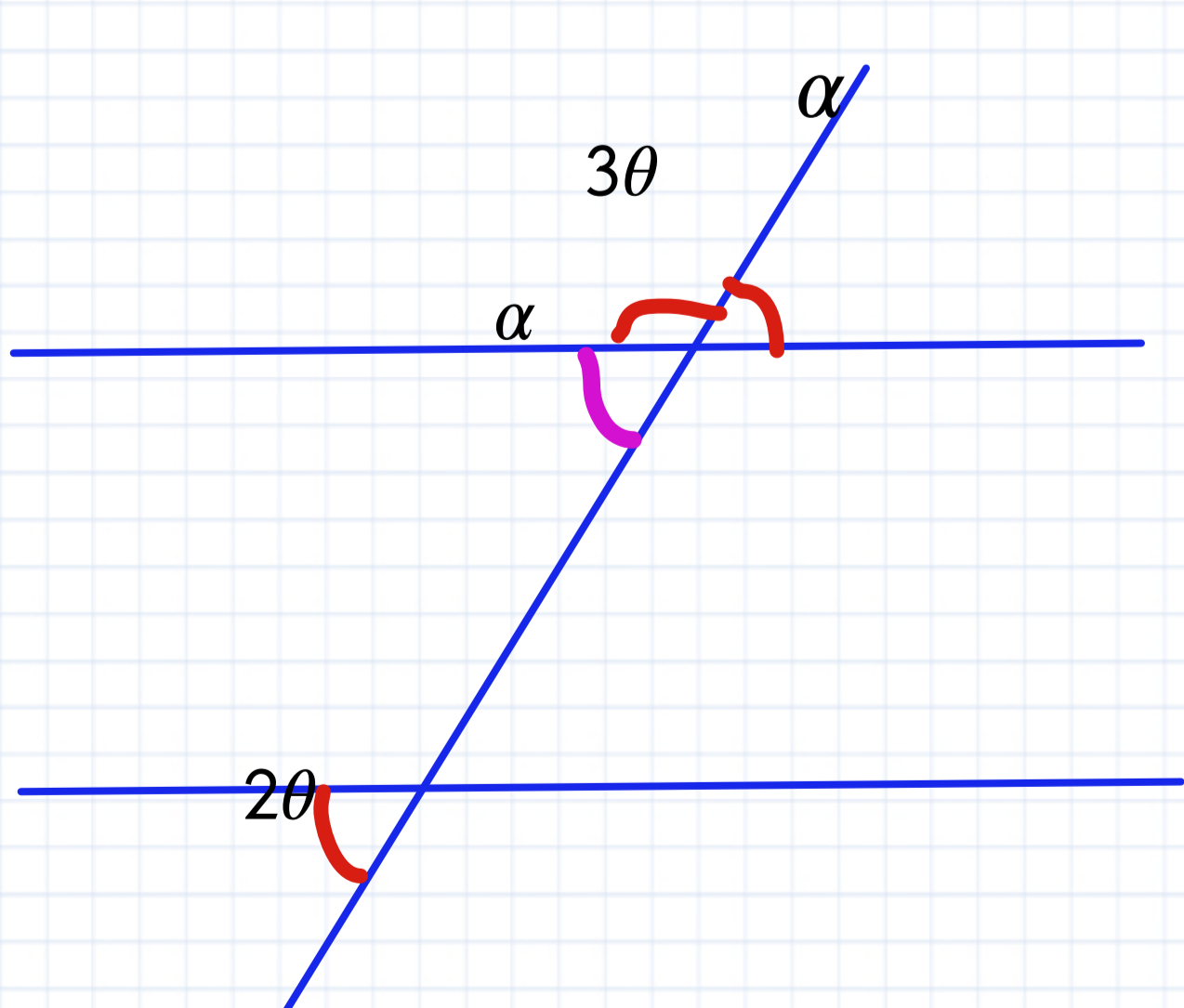
$$4x = 80$$

$$x = \frac{80}{4}$$

$$x = 20$$



10



$$3\theta + \alpha = 180 \quad (1)$$

$$\alpha = 2\theta \quad (2)$$

$$3\theta + 2\theta = 180$$

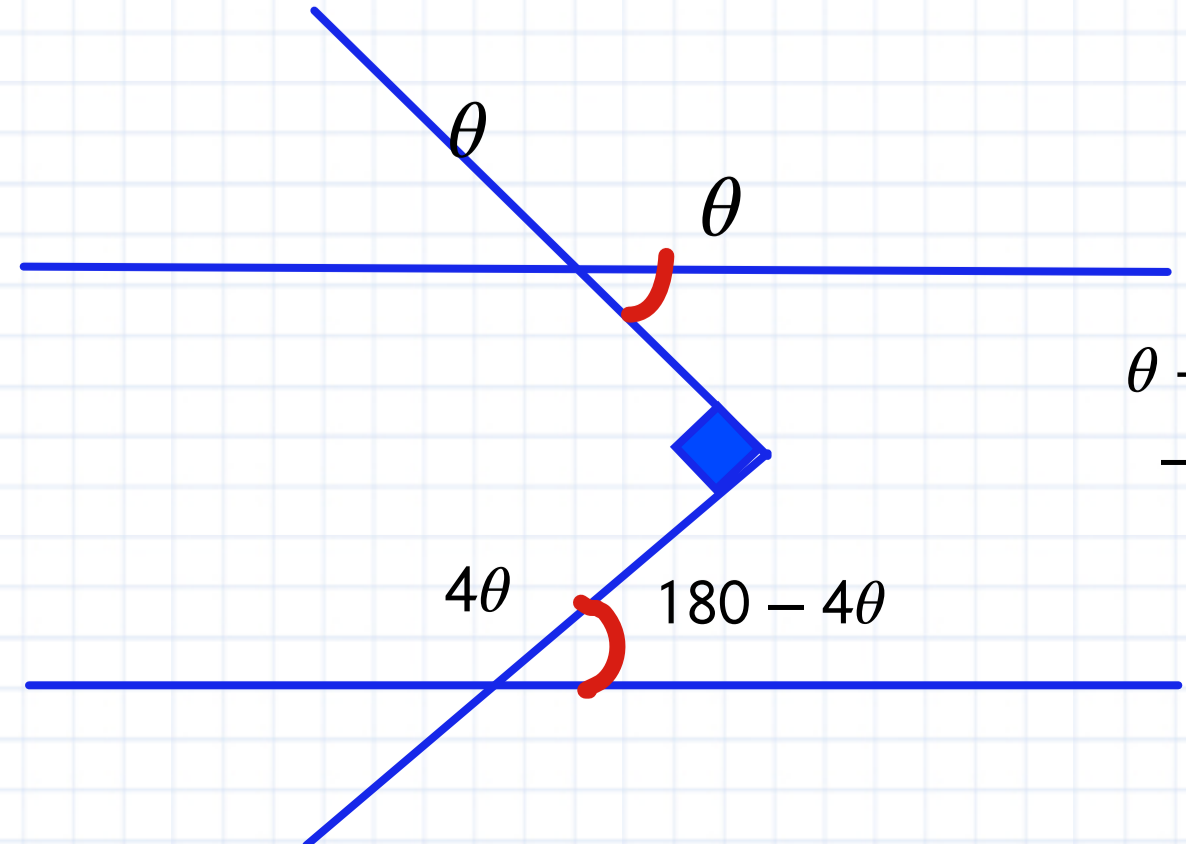
$$5\theta = 180$$

$$\theta = \frac{180}{5}$$

$$\theta = 36$$

$$\alpha = 2(36)$$

$$\alpha = 72$$



$$\theta + 180 - 4\theta = 90$$

$$-3\theta = 90 - 180$$

$$-3\theta = -90$$

$$\theta = \frac{-90}{-3}$$

$$\theta = 30$$

